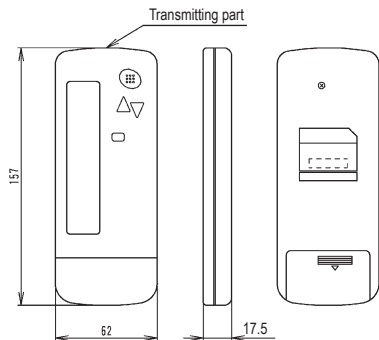
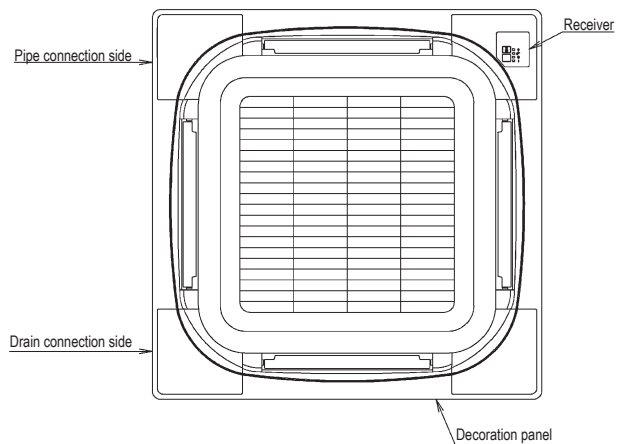


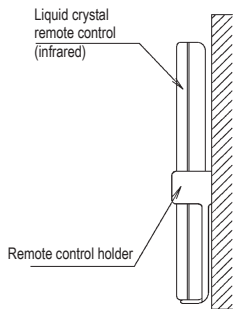
• Remote control dimensions



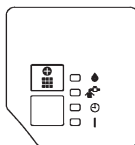
• Receiver installation procedure



• Remote control holder installation procedure  
(Installation to wall surface)

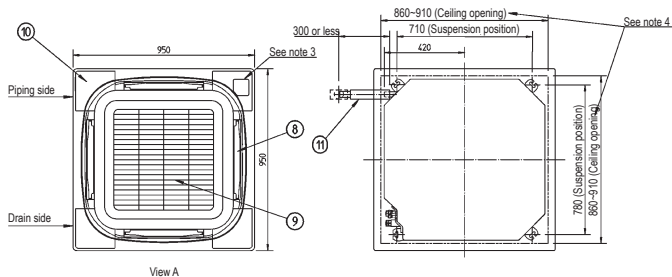


• Receiver detail

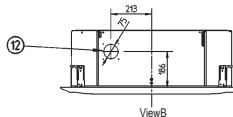


• Infrared remote control kit for each decoration panel

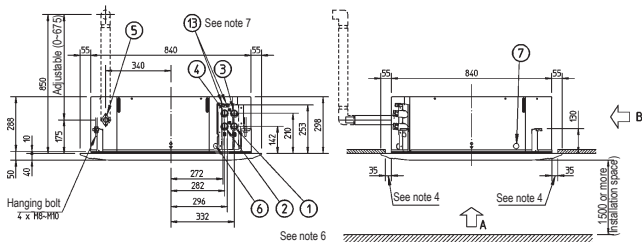
Infrared remote control kit	Decoration panel
BRC7F532F / BRC7F533F	BYCQ140CW1



View A



View B

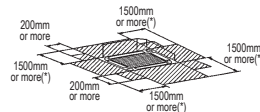
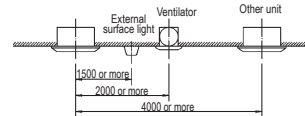


See note 6

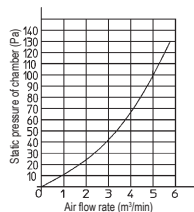
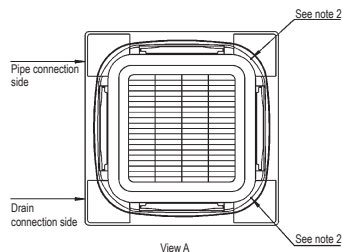
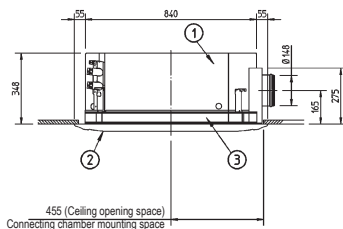
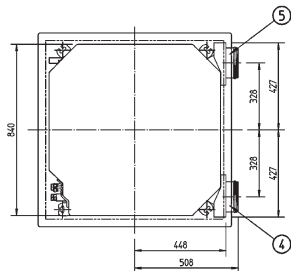
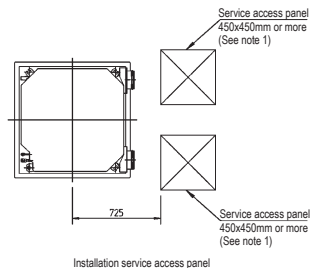
Item	Name	Description
1	Water pipe connection cooling in	3/4" BSP female
2	Water pipe connection cooling out	3/4" BSP female
3	Water pipe connection heating in	3/4" BSP female
4	Water pipe connection heating out	3/4" BSP female
5	Drain pipe connection	3/4" BSP female
6	Power supply entry hole	VP25 (O.D. ø32, I.D. ø25)
7	Transmission wiring entry hole	
8	Air discharge opening	
9	Air suction grille	
10	Corner decoration cover	
11	Drain hose	O.D. ø32, I.D. ø26
12	Knock out hole	
13	Air purge	

**NOTES**

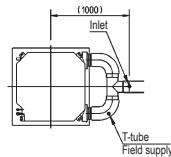
- Location of the nameplates:
  - Unit body: on the control box cover.
  - Decoration panel: on the panel frame at the motor side under the corner cover
- When installing an optional accessory, refer to the installation drawings.
  - For the fresh air intake kit an inspection part is necessary
- In case of using an infrared remote control, this position will be a signal receiver. Refer to the drawing of the infrared remote control for more detail.
- Make sure the spacing between the ceiling and the cassette is no more than 35mm. Max. ceiling opening: 910 mm.
- When the conditions exceed 30°C and RH 80% in the ceiling or fresh air is inducted into the ceiling, an additional insulation is required (polythylene foam, thickness 10mm or more)
- Only models FWC06-09BFV1B have heating pipe connections item 3 and item 4. For models FWC06-09BTW1B water pipe connections, item 1 and item 2, are used for heating and cooling. Models FWC06-09BTV1B have only one air purge (they have no separate heating circuit).
- Please respect the distances as shown on figure below:



(\*) In case a discharge opening is closed with the 'sealing member' option, the distance of 1500mm can be reduced to 500mm on the closed side.



Ventilation resistance in chamber (See note 5)



3TW33124-2

Item	Name	Remark
1	Indoor unit	-
2	Decoration panel	-
3	Suction chamber	-
4	Connecting chamber (right)	-
5	Connecting chamber (left)	-

## NOTES

- When installing this kit, inspection hatch is necessary. (It is necessary for servicing)  
Either one of inspection hatches must be installed.
- The corner air outlet of this part must be shut.
- In case of mounting a duct fan, make sure to use a wiring adapter for electrical appendices and link with the indoor unit fan.
- The intake air flow rate is recommended to be 20% or less of the H speed air flow rate. If the intake air flow rate is too large, the operating sound may rise or detection of the indoor unit suction temperature may be affected.
- This indicates the distance between the T-tube inlet and the indoor unit inlet, when the T-tube is connected.