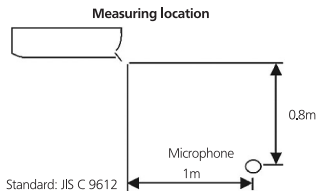
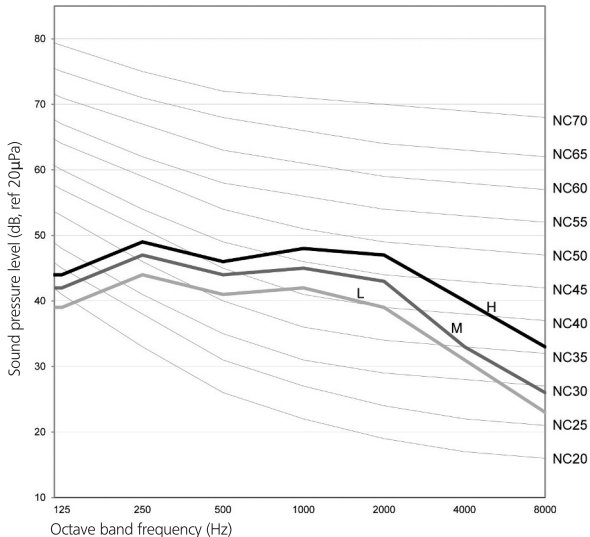


SOUND PRESSURE LEVEL

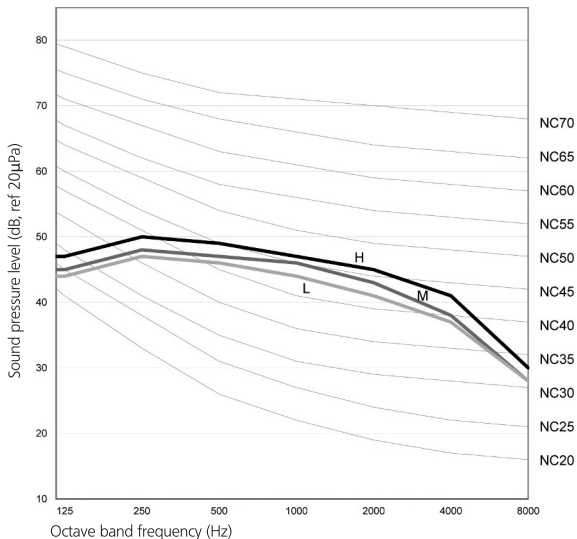
Model	Speed	1/1 Octave Sound Pressure (dB, ref. 20 μ Pa)							Overall (dBA)	Noise Criteria
		125Hz	250Hz	500Hz	1kHz	2kHz	4kHz	8kHz		
AHQ71C	High	43	47	45	45	43	36	29	49	
	Medium	42	46	44	44	42	34	27	48	
	Low	39	45	42	42	38	30	23	46	

AHQ100C

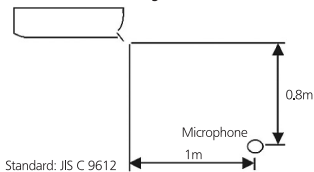


SOUND PRESSURE LEVEL

Model	Speed	1/1 Octave A-Weighted Sound Pressure (dBA), ref 20µPa							Overall (dBA)	Noise Criteria
		125Hz	250Hz	500Hz	1kHz	2kHz	4kHz	8kHz		
AHQ100C	High	44	49	46	48	47	40	33	62	48
	Medium	42	47	44	45	43	33	26	47	44
	Low	39	44	41	42	39	31	23	46	41



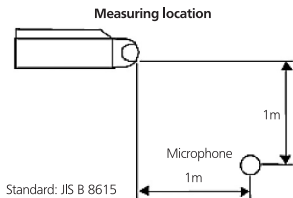
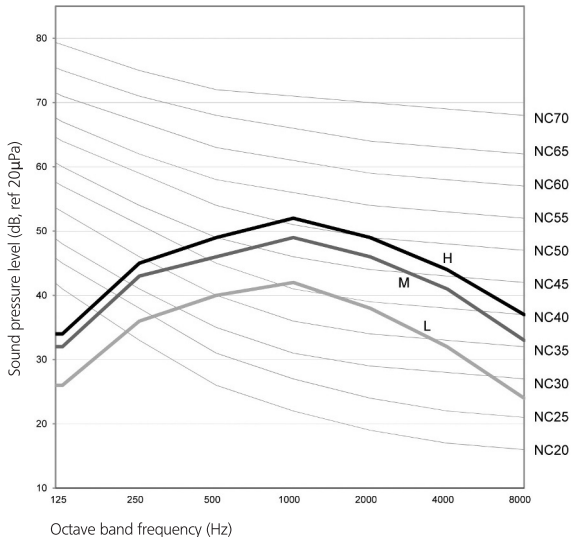
Measuring location



SOUND PRESSURE LEVEL

Model	Speed	1/1 Octave A-Weighted Sound Pressure (dBA), ref 20 μ Pa							Overall (dBA)	Noise Criteria
		125Hz	250Hz	500Hz	1kHz	2kHz	4kHz	8kHz		
AHQ125C	High	47	50	49	47	45	41	30	52	46
	Medium	45	48	47	46	43	38	28	50	45
	Low	44	47	46	44	41	37	28	49	43

AHQ140C



SOUND PRESSURE LEVEL

Model	Speed	1/1 Octave A-Weighted Sound Pressure (dBA), ref 20 μ Pa							Overall (dBA)	Noise Criteria
		125Hz	250Hz	500Hz	1kHz	2kHz	4kHz	8kHz		
AHQ140C	High	34	45	49	52	49	44	37	56	51
	Medium	32	43	46	49	46	41	33	53	48
	Low	26	36	40	42	38	32	24	46	41