

Standard: JIS B 8619

## SOUND PRESSURE LEVEL

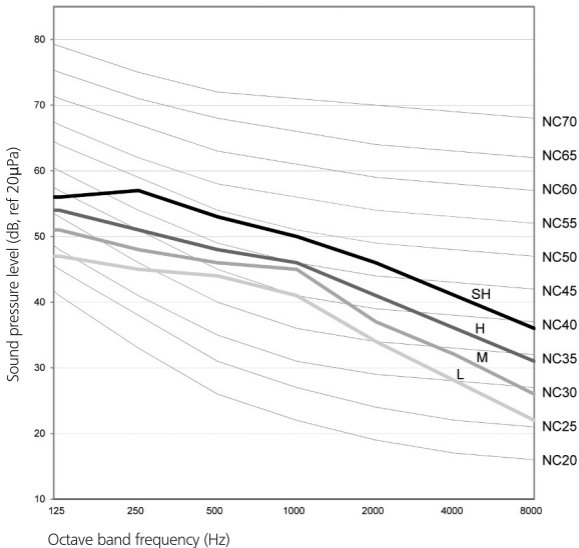
Model	Speed	1/1 Octave A-Weighted Sound Pressure (dBA, ref 20µPa)						Overall (dBA)	Noise Criteria	
		125Hz	250Hz	500Hz	1kHz	2kHz	4kHz			8kHz
ABQ71C	Super High	48	45	42	38	34	29	26	44	37
	High	45	42	39	35	31	26	22	41	34
	Medium	42	38	37	32	28	22	17	38	32
	Low	36	33	33	27	23	16	11	34	27

# ABQ100C

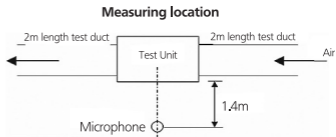
## Sound power Rated

	Cooling mode			
	Super High	High	Medium	Low
ESP	6.9	5.9	4.9	3.8
Rpm	790	720	660	580
125Hz	53.0	52.0	51.0	47.0
250Hz	57.0	55.0	53.0	50.0
500Hz	59.0	56.0	53.0	51.0
1kHz	55.0	53.0	50.0	47.0
2kHz	50.0	48.0	45.0	40.0
4kHz	46.0	43.0	39.0	34.0
8kHz	38.0	34.0	29.0	22.0
A(dBA)	60.0	57.0	54.0	52.0

# ABQ100C



Octave band frequency (Hz)

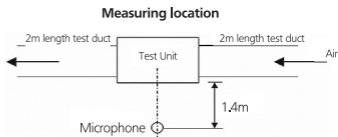
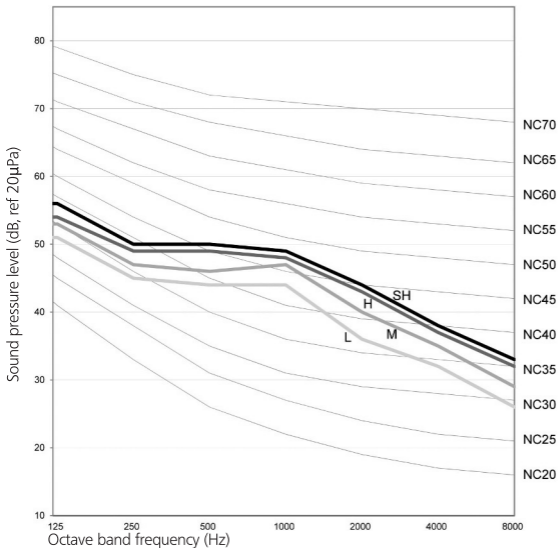


Standard: JIS B 8619

## SOUND PRESSURE LEVEL

Model	Speed	1/1 Octave A-Weighted Sound Pressure (dBA, ref 20µPa)						Overall (dBA)	Noise Criteria	
		125Hz	250Hz	500Hz	1kHz	2kHz	4kHz			8kHz
ABQ100C	Super High	56	57	53	50	46	41	36	55	49
	High	54	51	48	46	41	36	31	51	45
	Medium	51	48	46	45	37	32	26	48	44
	Low	47	45	44	41	34	28	22	45	40

# ABQ125C

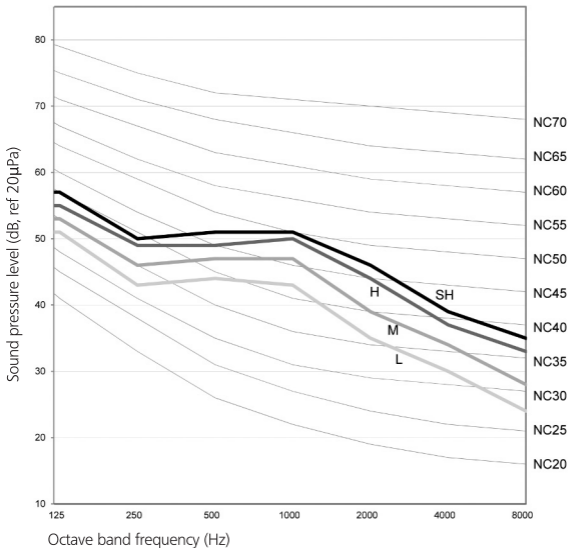


Standard: JIS B 8619

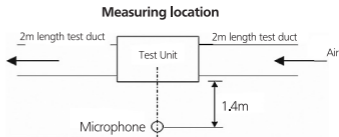
## SOUND PRESSURE LEVEL

Model	Speed	1/1 Octave A-Weighted Sound Pressure (dBA, ref 20µPa)							Overall (dBA)	Noise Criteria
		125Hz	250Hz	500Hz	1kHz	2kHz	4kHz	8kHz		
ABQ125C	Super High	56	50	50	49	44	38	33	53	48
	High	54	49	49	48	43	37	32	52	47
	Medium	53	47	46	47	40	35	29	50	46
	Low	51	45	44	44	36	32	26	47	43

# ABQ140C



Octave band frequency (Hz)



Standard: JIS B 8619

## SOUND PRESSURE LEVEL

Model	Speed	1/1 Octave A-Weighted Sound Pressure (dBA, ref 20µPa)							Overall (dBA)	Noise Criteria
		125Hz	250Hz	500Hz	1kHz	2kHz	4kHz	8kHz		
ABQ140C	Super High	57	50	51	51	46	39	35	55	50
	High	55	49	49	50	44	37	33	53	49
	Medium	53	46	47	47	39	34	28	50	46
	Low	51	43	44	43	35	30	24	47	42