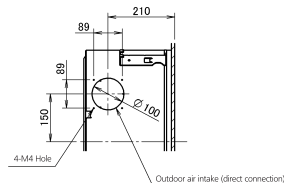
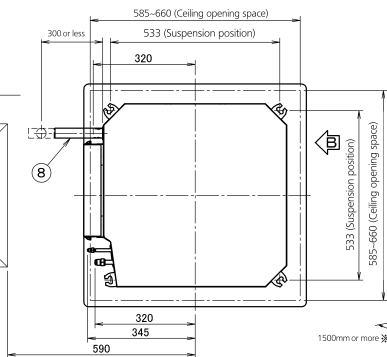
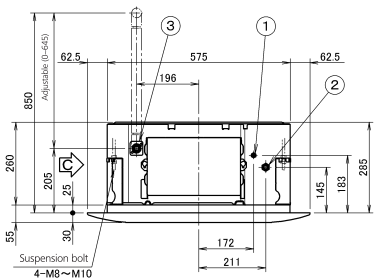
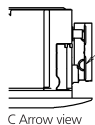
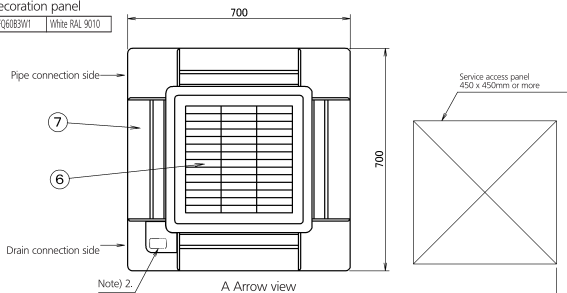


FFQ25-35C

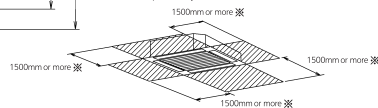
• Decoration panel

BYFQ60B3W1 White RAL 9010

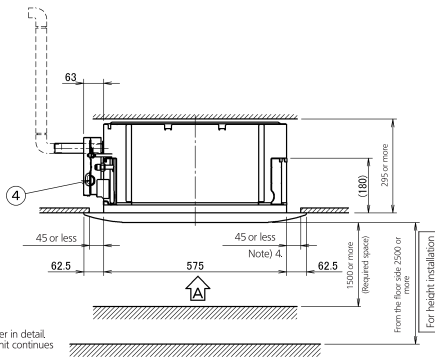


B Arrow view

• Required space



※ When the discharge grill is closed, the required space is 200mm or more



1	Liquid pipe connection	φ 64 flue connection
2	Gas pipe connection	φ 95 flue connection
3	Drain pipe connection	VP20 (D.D. φ 26)
4	Power supply connection	
5	Remote control code and control wiring connection	
6	Air discharge grill	
7	suction fan	
8	Drain hose (accessory)	1D, φ 25 (Dukit)

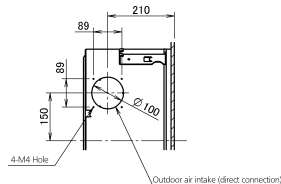
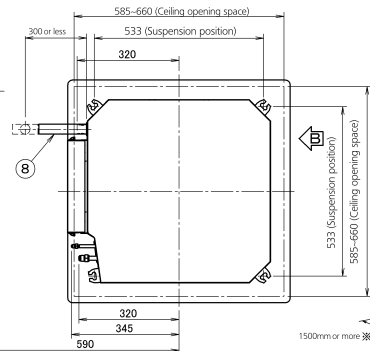
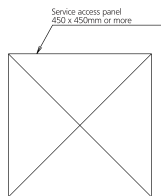
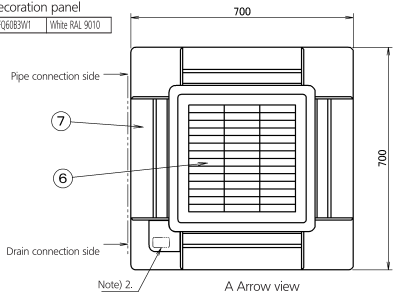
Note:

1. Sticking location for manufacturer's label
Manufacturer's label for indoor unit: on the bell mouth inside suction grille.
Manufacturer's label for decoration panel: on the inner frame inside suction grille.
2. In case of using infrared remote controller, this position will be a signal receiver. Refer to the drawing of infrared remote controller in detail.
3. When the temperature and humidity in the ceiling exceed 30°C and RH 80% or the fresh air is inducted into the ceiling or the unit continues 24 hour operation an additional insulation (thickness 10mm or more glasswool or polyethylene form) is required.
4. Though the installation is acceptable up to maximum of 660mm square ceiling opening, keep the clearance of 45mm or less between the main unit and the ceiling opening so that the panel overlap allowance can be ensured.

FFQ50-60C

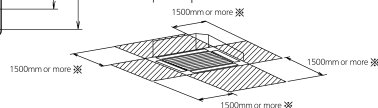
• Decoration panel

BYFQ60B3W1 White RAL 9010

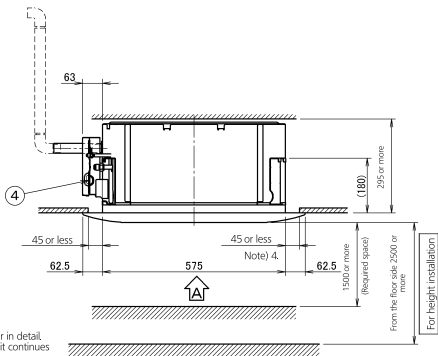
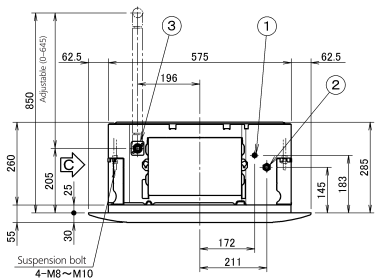
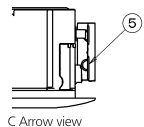


B Arrow view

• Required space



※ When the discharge grill is closed, the required space is 200mm or more.



1	Liquid pipe connection	φ 6.4 flare connection
2	Gas pipe connection	φ 12.7 flare connection
3	Drain pipe connection	VP20 (D.D. φ 26)
4	Power supply connection	
5	Remote control code and control wiring connection	
6	Air discharge grill	
7	suction grill	
8	Drain hose (accessory)	1D, φ 25 (Outlet)

Note:

1. Sticking location for manufacturer's label
Manufacturer's label for indoor unit: on the bell mouth inside suction grille.
Manufacturer's label for decoration panel: on the inner frame inside suction grille.
2. In case of using infrared remote controller, this position will be a signal receiver. Refer to the drawing of infrared remote controller in detail.
3. When the temperature and humidity in the ceiling exceed 30°C and RH 80% or the fresh air is inducted into the ceiling or the unit continues 24 hour operation an additional insulation (thickness 10mm or more glasswool or polyethylene form) is required.
4. Though the installation is acceptable up to maximum of 660mm square ceiling opening, keep the clearance of 45mm or less between the main unit and the ceiling opening so that the panel overlap allowance can be ensured.