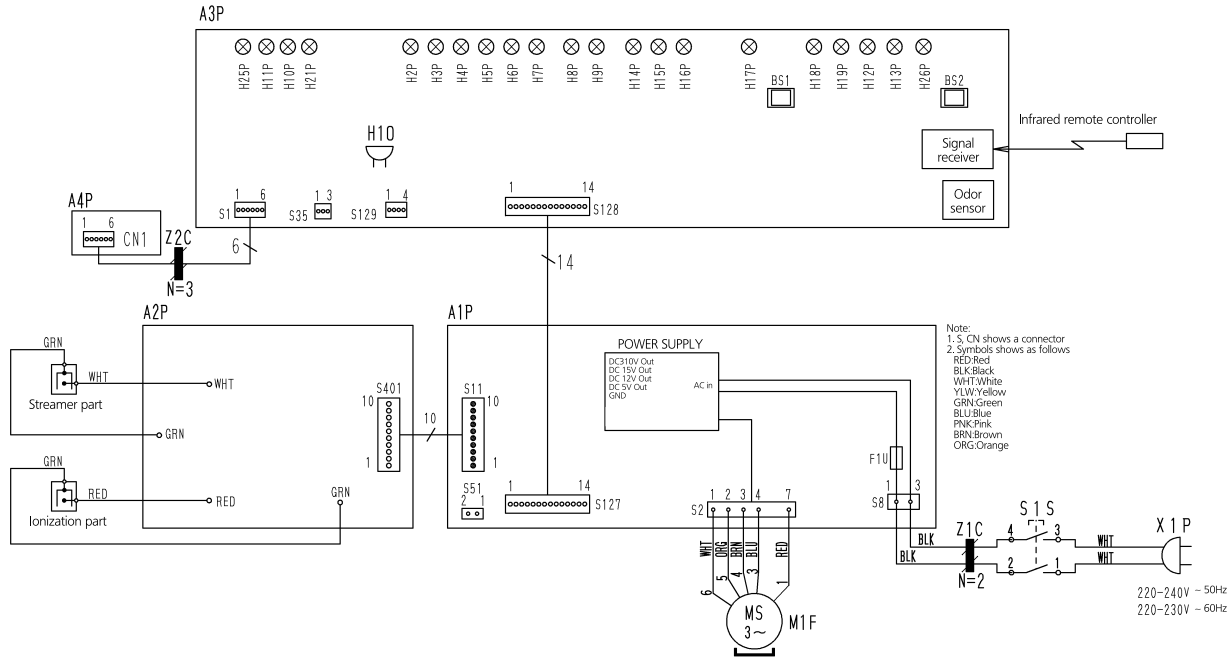


# MC70LVM



H10	Buzzer 1 (Receiving sign)	M1F	Fan motor	H6P	LED (H:Green)	H12P	LED (Odor sign:Green)	H18P	LED (Cleaning of ionization part:Orange)
S15	Safety switch	BS1	Main switch	H7P	LED (Turbo:Orange)	H13P	LED (Odor sign:Yellow)	H19P	LED (Cleaning of streamer part:Orange)
A1P	Printed circuit board (for power supply)	BS2	Filter reset switch	H8P	LED (Anti-pollen:Green)	H26P	LED (Odor sign:Red)	H21P	LED (Child lock:Orange)
A2P	Printed circuit board (for high voltage power supply unit)	H2P	LED (Auto operation:Yellow)	H9P	LED (Sleep:Green)	H14P	LED (Cut off timer (1 hour):Yellow)	X1P	Power supply plug
A3P	Printed circuit board (for display / control)	H3P	LED (LL:Green)	H10P	LED (Dust sign:Green)	H15P	LED (Cut off timer (2 hour):Yellow)	Z1C	Ferite core
A4P	Dust sensor	H4P	LED (L:Green)	H11P	(Dust sign:Yellow)	H16P	LED (Cut off timer (4 hour):Yellow)	Z2C	Ferite core
F1U	Fuse (250V, 3.15A)	H5P	LED (M:Green)	H25P	LED (Dust sign:Red)	H17P	LED (Filter replacement:Orange)		

3D069834