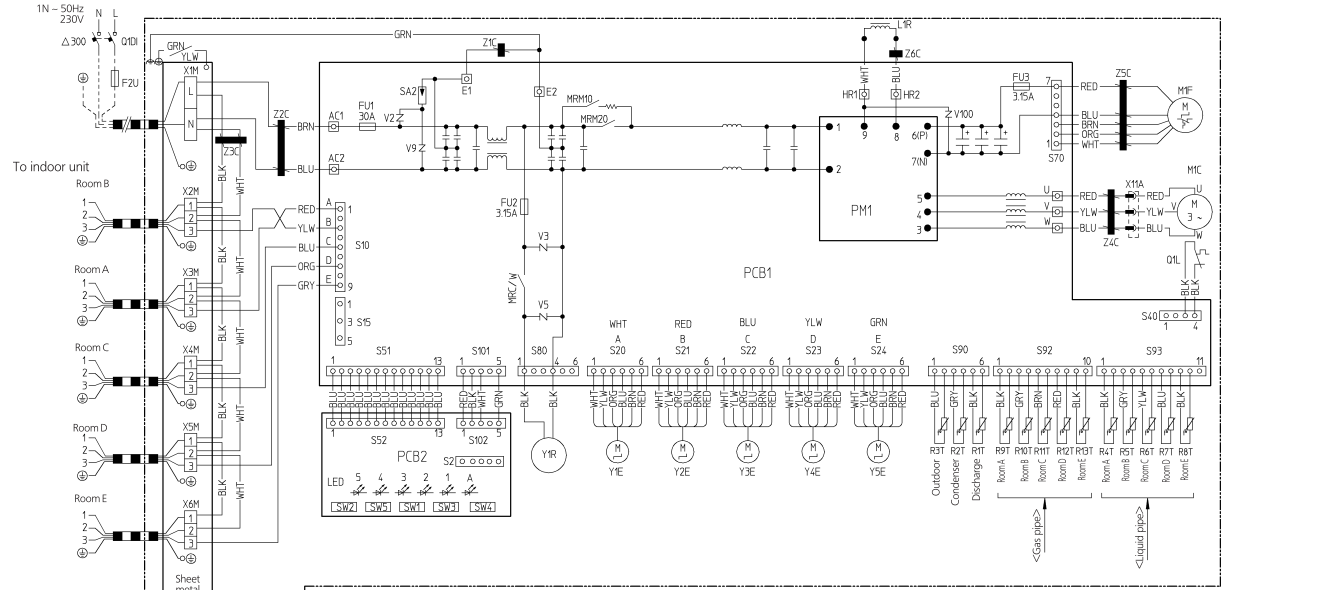


# 5MXS90E



- Notes:
- L: Live, N: Neutral, : Field wiring, : Terminal strip, : Connector, : Connection, : Protective earth (screw), : Relay connector, : Terminal
  - Colours: WHT=White, YLW=Yellow, ORG=Orange, RED=Red, GRN=Green, BLU=Blue, BRN=Brown, BLK=Black, GRY=grey

|                  |                                   |           |                                  |             |                                       |
|------------------|-----------------------------------|-----------|----------------------------------|-------------|---------------------------------------|
| Z1C-Z6C          | : Ferrite core                    | R1T-R3T   | : Thermistor                     | SW5         | : Night quiet mode setting SW (SW5)   |
| X1M-X6M          | : Terminal expansion valve coil   | R4T-R8T   | : Connector                      | M1C         | : Compressor motor                    |
| Y1E-Y5E          | : Electronic expansion valve coil | R9T-R13T  | : Connector                      | M1F         | : Fan motor                           |
| V2,V3,V5,V9,V100 | : Varistor                        | S2-S102   | : Connector                      | L1R         | : Reactor                             |
| SA2              | : Surge arrester                  | LED1-LED5 | : Light emitting diode           | Q1L         | : Overload protector                  |
| FU1,FU2,FU3      | : Fuse                            | LEDA      | : Light emitting diode           | PM1         | : Power module                        |
| AC1,AC2          | : Terminal strip                  | SW1       | : Forced operation switch (SW1)  | PCB1,2      | : Printed circuit board               |
| U,V,W,X11A       | : Terminal strip                  | SW2       | : Operation mode SW (SW2)        | Y1R         | : Four way valve coil                 |
| E1,E2            | : Terminal strip                  | SW3       | : Wiring error check SW (SW3)    | Sheet metal | : Terminal strip fixed plate          |
| HR1,HR2          | : Connector                       | SW4       | : Priority room setting SW (SW4) | F2U         | : Field fuse                          |
| M1M10, M1R20     | : Magnetic relay                  |           |                                  | Q1DI        | : Field earth leakage breaker (300mA) |
| MRC/W            | : Magnetic relay                  |           |                                  |             |                                       |