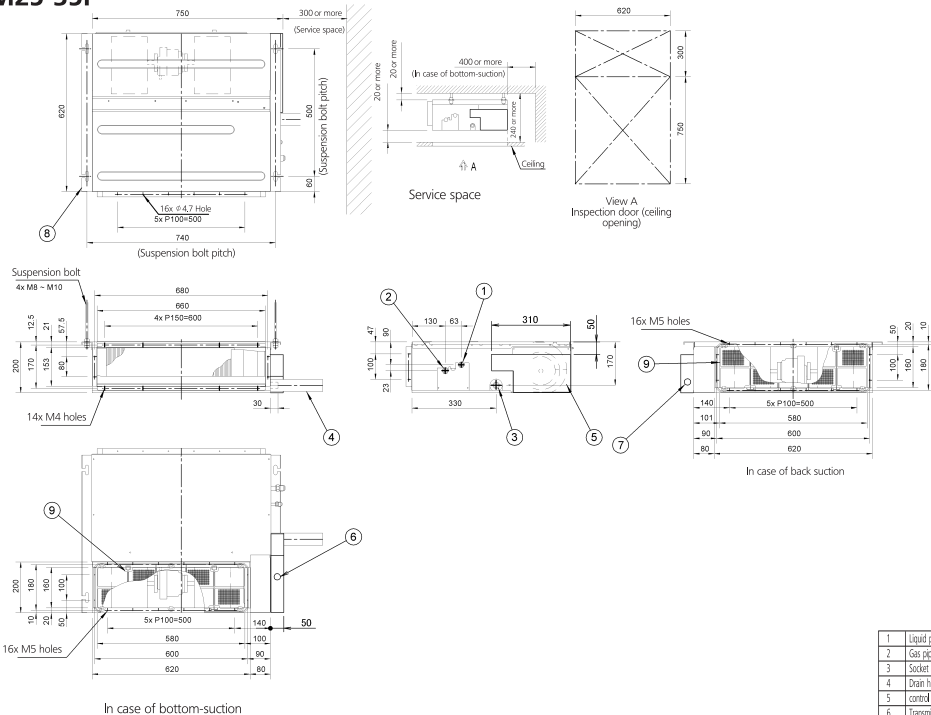


FDXM25-35F

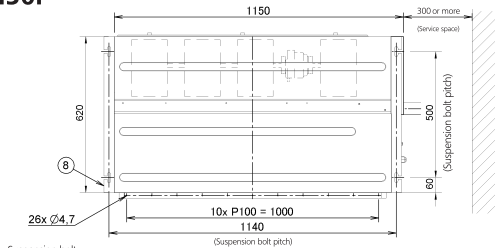


Note:

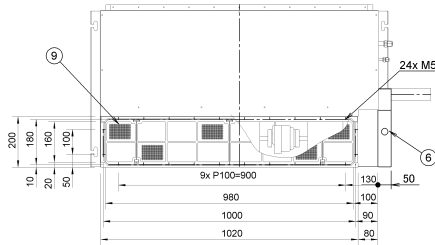
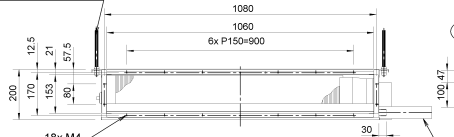
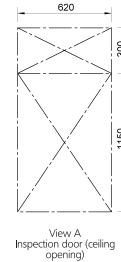
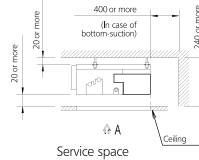
- In case of back-suction, mount chamber cover to bottom side of the unit.
In case of bottom-suction, mount chamber cover to back side of the unit.
- Location of unit's name plate: control box cover.
- Mount the air filter at the suction side. (Use an air filter whose dust collecting efficiency is at least 50% in a gravimetric technique.) It can not be equipped with air filter (accessory) when connecting duct to suction side.

1	Liquid pipe connection	$\phi 6.4$ Flare connection
2	Gas pipe connection	$\phi 9.5$ Flare connection
3	Socket for drain	VP 20 (OD $\phi 26$, ID $\phi 20$)
4	Drain hose (accessory)	ID $\phi 25$ (Outlet)
5	Control box	
6	Transmission wiring	
7	Power supply connection	
8	Suspension bracket	
9	Air filter (accessory)	

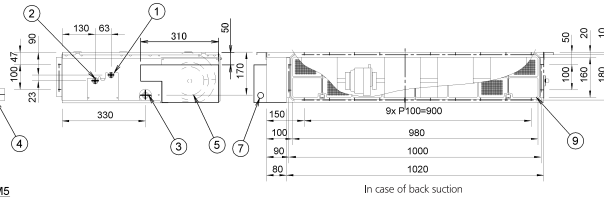
FDXM50F



Suspension bolt
4x M8 - M10



In case of bottom-suction



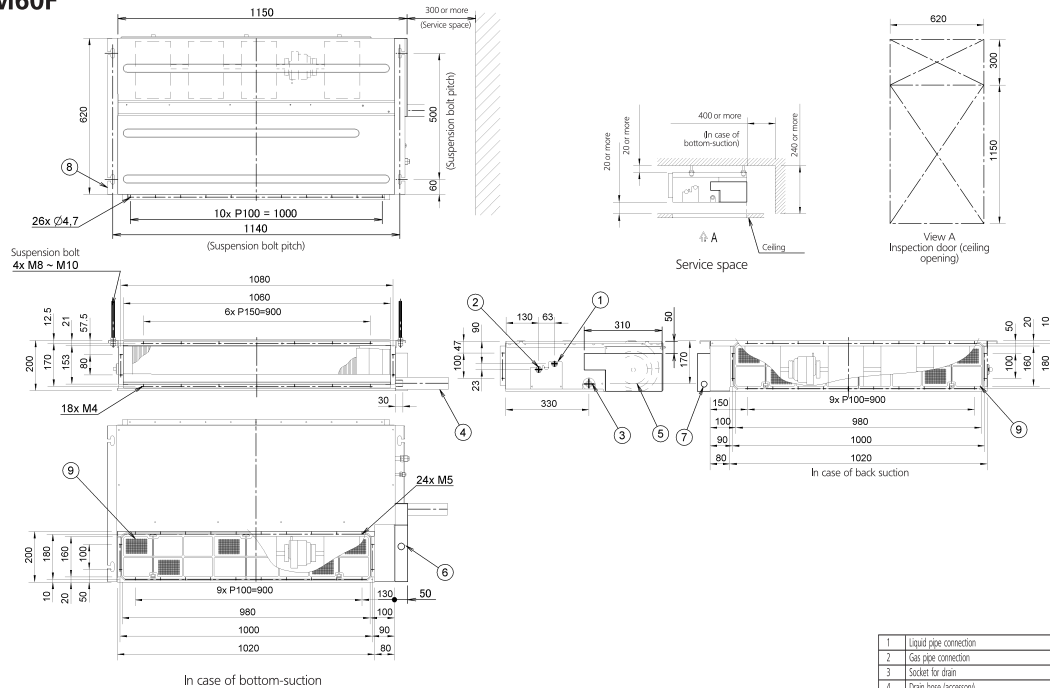
In case of back suction

1	Liquid pipe connection	Ø 6.4 flare connection
2	Gas pipe connection	Ø 12.7 flare connection
3	Socket for drain	VP 20 (OD: Ø 26, ID: Ø 20)
4	Drain hose (accessory)	ID: Ø 25 (Outlet)
5	control box	
6	Transmission wiring	
7	Power supply connection	
8	Suspension bracket	
9	Air filter (accessory)	

Note:

- In case of back-suction, mount chamber cover to bottom side of the unit.
- In case of bottom-suction, mount chamber cover to back side of the unit.
- Location of unit's name plate: control box cover.
- Mount the air filter at the suction side. (Use an air filter whose dust collecting efficiency is at least 50% in a gravimetric technique). It can not be equipped with air filter (accessory) when connecting duct to suction side.

FDXM60F



Note:

1. In case of back-suction, mount chamber cover to bottom side of the unit.
2. In case of bottom-suction, mount chamber cover to back side of the unit.
3. Location of unit's name plate: control box cover.
4. Mount the air filter at the suction side. (Use an air filter whose dust collecting efficiency is at least 50% in a gravimetric technique.) It can not be equipped with air filter (accessory) when connecting duct to suction side.

1	Liquid pipe connection	$\varnothing 6.4$ Fibre connection
2	Gas pipe connection	$\varnothing 12.7$ Fibre connection
3	Socket for drain	VP 20 (OD $\varnothing 26$, ID $\varnothing 20$)
4	Drain hose (accessory)	ID $\varnothing 25$ (Outer)
5	control box	
6	Transmission wiring	
7	Power supply connection	
8	Suspension bracket	
9	Air filter (accessory)	